

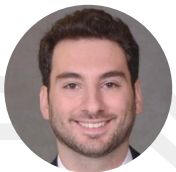
WashU Law Peer Career Advisors 2019- 2020



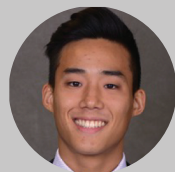
Lola Awobokun | 3L, lola.awobokun@wustl.edu
Baker McKenzie, Houston
Texas | Interviewing | Big Law | Networking



Jayce Gustafson | 2L, jayce.gustafson@wustl.edu
Friday, Eldredge & Clark, Arkansas
Arkansas | San Diego | Big Law | Judicial Internships



Franco Benyamin | 3L, fwbenyamin@wustl.edu
Young, Conaway, Stargatt & Taylor,
Wilmington, DE
Fish & Richardson, Wilmington, DE
Patent | Interviewing | New York | Delaware



Terry Ha | 2L, terryha@wustl.edu
US Bankruptcy Court for the Central
District of California
California | Big Law | Judicial Externships



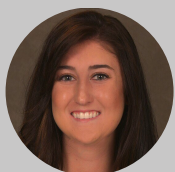
Tyler Bush | 3L, tyler.bush@wustl.edu
US Attorney's Office for the Western District
of Wisconsin
Fredrikson & Byron, Minneapolis
St. Louis | Chicago | Direct Send



Robin Harvey | 3L, harvey.r@wustl.edu
Land of Lincoln Legal Assistance, Alton
Education Law Center, Philadelphia
Civil Legal Services | Political Jobs |
Public Interest | Education Law



Kelly Frye | 3L, kellytfrye@wustl.edu
Lawyers' Committee for Civil Rights Under
Law, Washington, D.C.
ACLU, Raleigh, NC
Clerkships | DC | Public Interest



Joie Johnston | 2L, joannajohnston@wustl.edu
Bradley, Nashville, TN
DC | Nashville | Pittsburgh | West Virginia |
Big Law | Clerkships



Libby Grube | 3L, libby.grube@wustl.edu
Gordon & Rees, Chicago
Tucker Ellis, St. Louis
St. Louis | Mid-Sized Firms | Chicago |
Clerkships | Judicial Externships



Robin Liu | 3L, qianrliu@wustl.edu
Beijing Arbitration Commission
Arnold & Porter, San Francisco
San Francisco | Chicago | Patent |
Agriculture | International Student

WashU Law Peer Career Advisors 2019- 2020



Michael Moore | 3L, moore.michael@wustl.edu

Legal Aid Board, South Africa
Philadelphia District Attorney's Office
Dallas | Criminal Justice



Megan Smit | 2L, msmit@wustl.edu

Lewis Rice, St. Louis
International | New York | St. Louis |
Big Law | Cover Letters



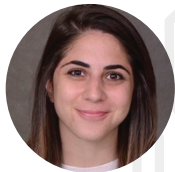
Raymond Myers | 2L, raymondmyers@wustl.edu

Land of Lincoln, East St. Louis, IL
Kentucky | Illinois | Government | Public
Interest



Stewart Subjinski | 2L, ssubjinski@wustl.edu

Miami-Dade State Attorney's Office
Miami | Government | Public Interest |
Lobbying



Charlotte Nicholas | 3L, c.nicholas@wustl.edu

Legal Aid Society, New York
Arnold & Porter Kaye Scholer, New York
Philadelphia | New York | Call Backs |
Interviewing



Rai-ya Wilson | 2L, wilson.rai-ya@wustl.edu

Mercer County Prosecutor's Office, NJ
Family Law | Prosecutor's Office |
New Jersey | Pennsylvania



Lili Ramirez | 3L, lramirezsaravia@wustl.edu

US Attorney's Office for Eastern PA
Debevoise & Plimpton, D.C.
Regulatory Enforcement | Federal
Government | Cover Letters | Interviewing



Ernest Zhu | 3L, ernestzhu@wustl.edu

US District Court for the District of RI
Hesse Martone | Jackson Lewis, St. Louis
Labor and Employment | San Francisco |
Boutique Law Firms | St. Louis



Rebecca Rowland | 3L,
rebecca.rowland@wustl.edu

Procure Technologies, Santa Barbara
Sullivan & Cromwell, NYC
New York | In-House | Big Law | Litigation